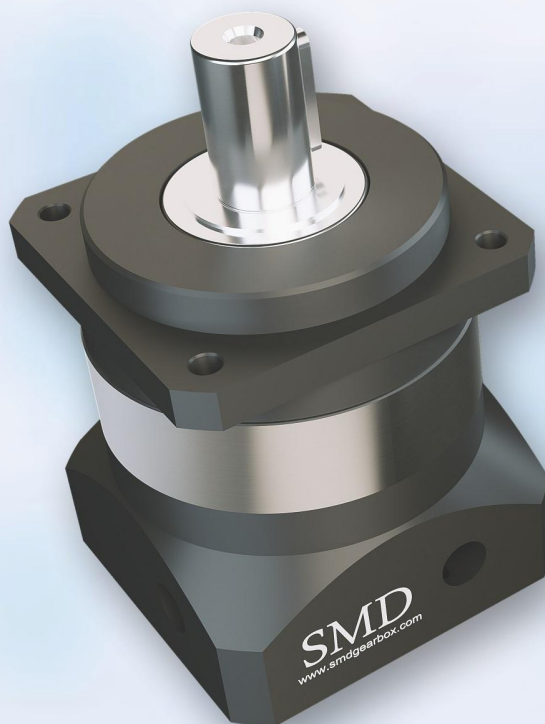




SMD GEARBOX

SMD

BRILLIANTLY AGILE!



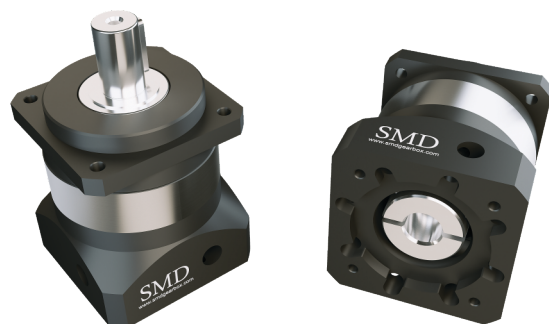
HIGH PRECISION SERVO GEARBOX



Planetary Gearbox with Shaft End – SPS, SNP, SPE, SPRE

1. Servo Motor Gearbox with Shaft output.
2. Accuracy: 1-12 Arc-Min.
3. Nominal Torque Capacity: 17Nm to 2200Nm.
4. Available Reduction Ratio: 1:3 to 1:100.
5. Designed to use in various Servomotors.
6. Self-lubricating, Easy to install and Seal Shut Design.
7. Models: SPS – 40, 60, 70, 90, 120, 150, 180, 220.

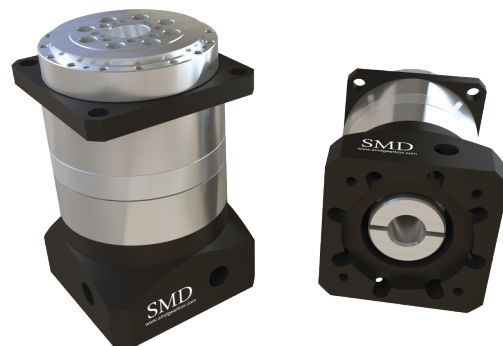
USPs: High Torque capacity and low Inertia.



Planetary Gearbox with Flange End – SPF, SNDU, SPFE

1. Servo Motor Gearbox with Flange output.
2. Accuracy: 1-12 Arc-Min.
3. Nominal Torque Capacity: 17Nm to 2200Nm.
4. Available Reduction Ratio: 1:3 to 1:100.
5. Designed to use in various Servomotors.
6. Self-lubricating, Easy to install and Seal Shut Design.
7. Models: SPFE - 64, 90, 110, 140, 200, 255

USPs: Special Purpose for indexing with very high accuracy.

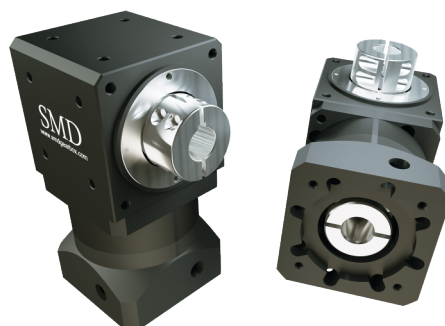


Right Angle Gearbox – SRAS, SRAH, SRAC, SRAE, SS

1. 90 Degree Motion Transmission.
2. Accuracy: 3-15 Arc-Min.
3. Nominal Torque Capacity: 44Nm to 1390Nm.
4. Available Reduction Ratio: 1:1 to 1:200.
5. Self-lubricating, Easy to install and Seal Shut Design.
6. 3 Types available: Solid Shaft, Hollow Bore, Collar Clamp type.
7. Models: SRAC – 40, 60, 90, 120, 150, 180, 220.

USPs: 5 Mounting surfaces for flexible installation.

Suitable for low load and intermitted motion.



Hollow Rotary Gearbox – ST, STE

1. Direct attachment with simple and reliable design.
2. Accuracy: 0.5 Arc-Min.
3. Torque Capacity: 1Nm to 400Nm
4. Available Reduction Ratios 1:10.
5. Large Concentric Hole provided for organized Wiring and Piping.
6. Excellent Repeatability
7. Models: ST – 85, 130, 200, 230, 280, 320, 450

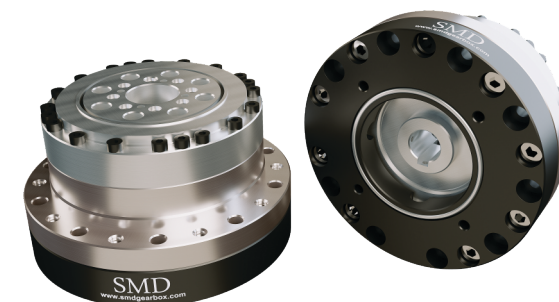
USPs: Large reduction available by combining with Planetary Gearbox, Smooth, Accurate and Positioning.



Harmonic Gearbox with Flange End – SCSG

1. Diverse appearance, Suitable for Robotic Arms.
2. Accuracy: Less than 20 Arc-Sec
3. Nominal Torque Capacity: 3.5Nm to 382 Nm.
4. Reduction Ratio Available: 1:50, 1:80, 1:100, 1:120, 1:160.
5. Short Axial Dimension.
6. Used in Robotic Industries for Multi Axial Robot Joints.
7. Models: SCSG - 10, 14, 17, 20, 25, 32, 40, 45.

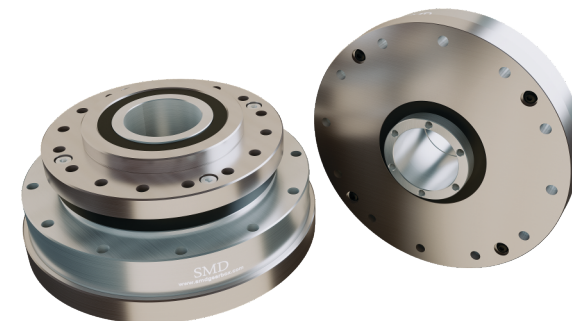
USPs: High Rigidity, and Stable Precision Work.



Harmonic Gearbox with Hollow Bore End – SSHG

1. Diverse appearance, Suitable for Robotic Arms.
2. Accuracy: Less than 20 Arc-Sec
3. Nominal Torque Capacity: 5.4Nm to 382 Nm.
4. Reduction Ratio Available: 1:50, 1:80, 1:100, 1:120, 1:160.
5. Short Axial Dimension.
6. Used in Robotic Industries for Multi Axial Robot Joints.
7. Models: SSHG - 10, 14, 17, 20, 25, 32, 40, 45.

USPs: High Rigidity, and Stable Precision Work.



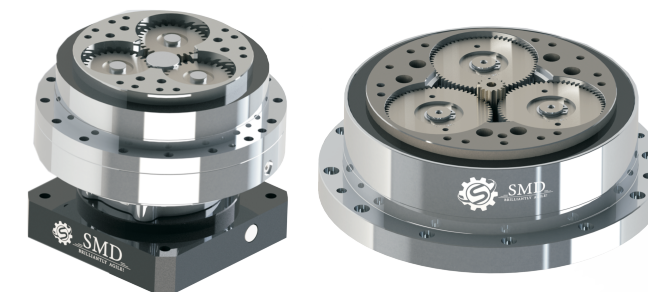
Automated Guided Vehicle Wheels – SWT

1. AGV wheel specially designed for AMR and material handling types of Robot.
 2. Nominal wheel torque : 63Nm to 320Nm
 3. Load capacity : upto 1200Kg
 4. Wheel diameter ranging from : 150 to 250mm
 5. Models SWT : 118,138,160 & 190
 6. Reduction Ratio Available : 1:2 to 1:40
 7. Suitable Servo motor : 400watt to 1500watt
- USP : Integrated Motor planetary reducer and rubber wheel, low noise & Vibrations, high efficiency & Precise positioning.



Cycloidal Gearbox – SRV-E

1. Diverse appearance; suitable for robot arm, palletizers.
2. Model Sizes – SRV20E, 40E, 80E, 110E, 160E, 320E, 450E
3. Accuracy: Less than 1 Arc-Min.
4. Nominal torque capacity: 110 Nm to 6135 Nm
5. Available reduction ratios: Upto- 1:200
6. Short axial dimension.
7. High rigidity for stable precision work.
8. Applied in robot industry, especially for multi-axis robot joints.



SMD Servo Gearbox

4 Reasons to Increase 50% Production



LOW VIBRATION



**INCREASES MACHINE WORKING
SPEED & STABILITY**



**EXCLUSIVE PRODUCT,
BACKLASH 1 ACR-MIN**



**INCREASE PRODUCTION
EFFICIENCY & QUALITY**



**Planetary Gearbox with
Flange End – SPF**



**Harmonic Gearbox with
Hollow Bore End – SSHG**

GET IN TOUCH



HEADQUARTERS

SMD Gearbox (Taiwan)

5F. No. 232, Sec.3, Zhongshan Rd,
Taichung City, Taiwan - 41171.

+886 933510083

HEAD OFFICE (OVERSEAS)

SMD Gearbox (India)

A-51, H Block, M. I. D. C., Pimpri-Chinchwad
Pune, Maharashtra, India - 411018.

+91 70306 69818

+91 020-46212730

OVERSEAS OFFICE (THAILAND)

SMD Gearbox Co. Limited.

1500 Moban Pairroj, Krongkar 5,
Soi 3, Bangna Trad, Bangna,
Bangkok 10260, Thailand.

+66 94 991 2346

sales@smdgearbox.com

www.smdgearbox.com